

# My Journey to Lourdes



WITH THE SSPX PILGRIMAGE

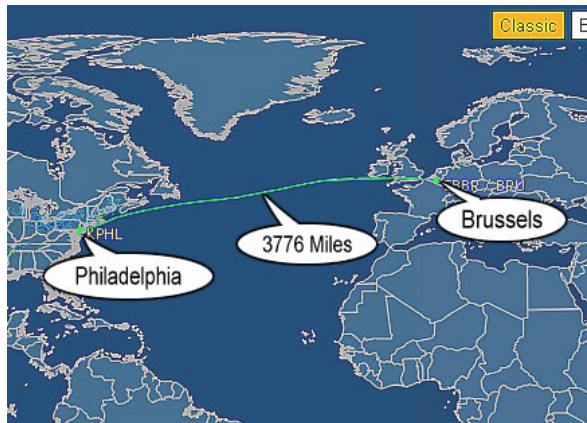
October 20, 2011 to October 25,



## My Flights and Rail



Seattle to Philadelphia  
5 hours 5 minutes



Philadelphia to Brussels  
7 hours 45 minutes



Brussels to Toulouse  
1 hour 28 minutes

French Rail to Lourdes  
1 hour 25 minutes



My Hotel in Lourdes  
La Solitude

View From My Hotel





# My Journey to Lourdes

## SSPX Schedule in Lourdes

### Pilgrimage Program

Saturday, October 22, 2011

14:00: Rosary in the Basilica of St. Pius X

14h30: Solemn Mass at the Basilica of St. Pius X

4:30 p.m. to 5:45 p.m.: Way of the Cross of patients in the meadow

4:30 p.m. to 5:45 p.m.: Way of the Cross in the Mountain Espélugues

21h00: Torchlight Procession, starting from the podium of the PRAI-series, followed by a prayer vigil at the Grotto of 23h to 06h00



Sunday, October 23, 2011

9:00: Rosary at the Church of St. Bernadette

9.30am: Solemn Mass at the Church of St. Bernadette

11:30: Rosary at the Grotto

15:00: Vespers, Procession of the Blessed Sacrament, and Holy Blessing of the Sick

2030: Eucharistic Adoration in the Basilica SaintPie X to 8:00



Monday, October 24, 2011

9:30 Rosary in the Basilica of St. Pius X

10h00: Solemn Mass at the Basilica of St. Pius X

11:15 Rosary at the Grotto information



Inside Basilica of St. Pius X



Solemn Mass inside Chapel of St. Bernadette

October 20, 2011 to October 25, 2011

---

## In Lourdes



Sanctuary of Our Lady of Lourdes



View From Esplanade



Pilgrims at Grotto



Blessed Virgin In Grotto



Spring in Grotto



Blessed Virgin Statue



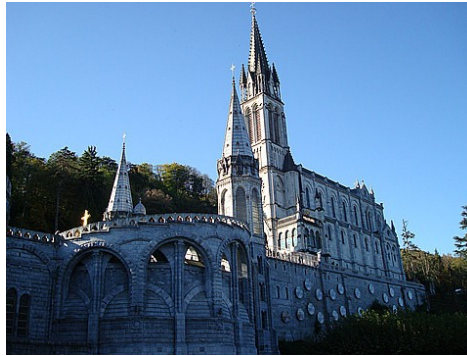
Inside Rosary Chapel—The Resurrection



Atop Rosary Chapel



Inside Rosary Chapel—The Crowning



Pilgrims in Procession



Pilgrims in Procession

